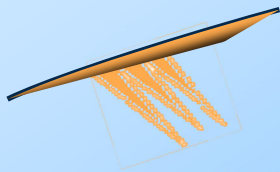




Excellence in Industrial Nesting Software Since 1975

"Designed with Productivity in Mind"



B+ **QuickDuct** **CAM** **BENCH+**

New! User Configurable Screen Layout!

Automatic Fitting Layout

Full SMACNA Seam & Connector Library

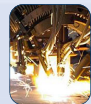
Nest to Maximize Material Yield

The 50 Most Used Fittings

Job Costing

Markets: HVAC Blow pipe and Sheet Metal

ShopData provides
and supports
programmable
post processors
for these
CNC Applications.



Oxy



Plasma



WaterJet

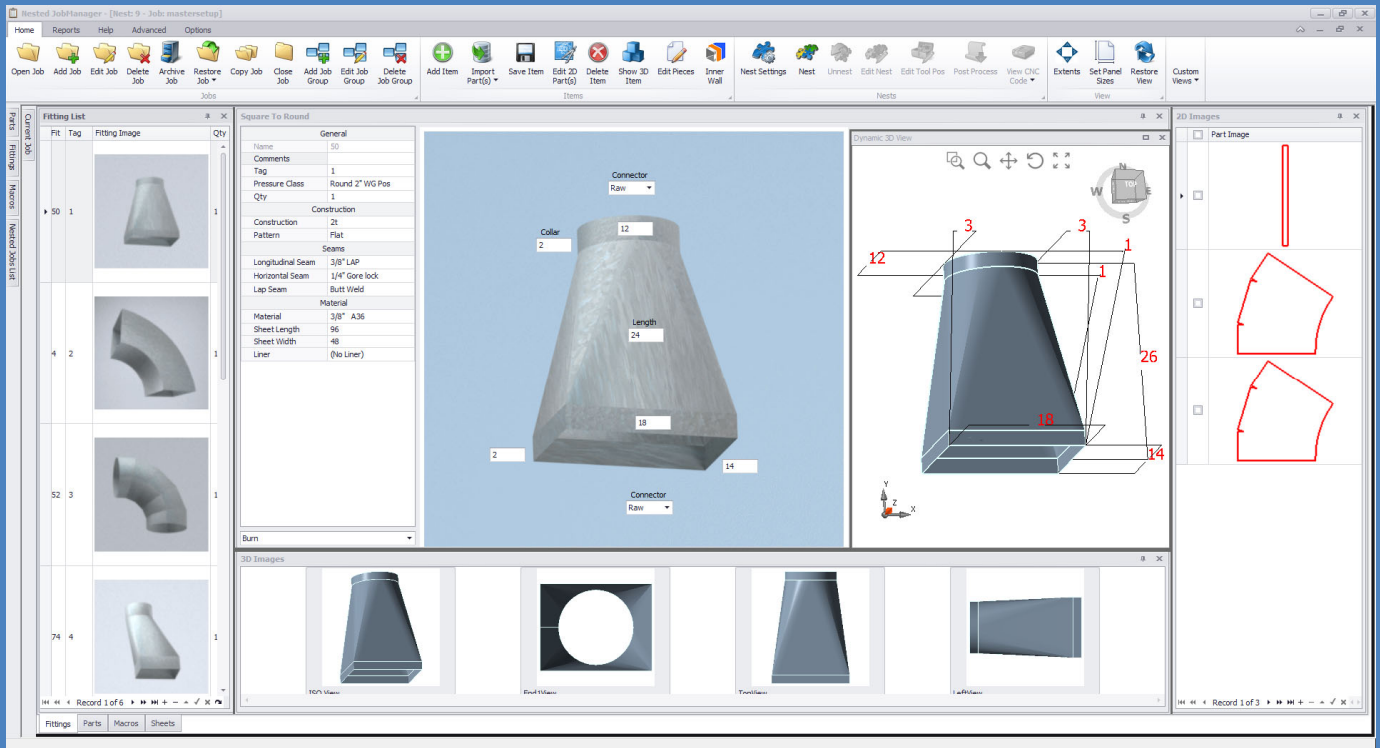


Laser

*"The Industries
Premier Duct Fabrication
software package"*

ShopData Systems is an Employee Owned Company

shopdata.com



Our new user configurable screen is designed to give you the maximum flexibility and maximum productivity. You arrange the screen the way you want, even use two screens, whatever helps you get the job done!

The power you need with the features you want!

QuickDuct CAM Bench+™ has powerful features that take the manual effort out of job takeoff, tooling, nesting and downloading. It includes the “extras” that you would find only in a system developed by sheet metal experts.

A comprehensive basic fitting library and comprehensive seam & connectors libraries gives you everything you need to design, input, nest and cut your fittings

Now with our new “Fly-Out Window” user interface.

By using powerful Windows’ features, our new Fitting Palette makes it easy to select your fittings, input the dimensions, quantity and material type, and then see an actual 3D preview of the fitting and the 2D flat layout of the parts. One click of the auto-nest button nests the parts to optimize material usage and then you can view the nested plates as they will be cut.

You can even modify the finished patterns for special applications by using our powerful “Workbench” drawing tool. You can place holes, chop pieces, scale or stretch them, and even merge two fittings to make your own custom fittings.

New! User Configurable Screen Layout!

Automatic Fitting Layout

Full SMACNA Seam & Connector Library

Nest to Maximize Material Yield

The 50 Most Used Fittings

Job Costing

Markets: HVAC Blow pipe and Sheet Metal



**1771 International Parkway
Suite 127
Richardson, TX 75081**



Most comprehensive basic fitting library in the Industry that provides the ultimate in flexibility!

The QuickDuct CAM Bench+ Fittings library includes the 50 most used rectangle and round fitting shapes including cones, offsets, elbows, wyes, and square-to-rounds. Capabilities such as mitering, reducing, concentric/eccentric dimensioning are available as well as selectable seam placement, selectable hole sizing, dual wall, tie rod holes and inside/outside diameter material compensation.

Incredible user-definable shop standards allow you to modify your seams and connectors.

Shop Data allows you to customize your HVAC software. Use standard industry pressure classes, or define your own pressure classes and construction tables. Define seams, connectors, vanes, materials and more. Enter your actual costs for accurate job costing!

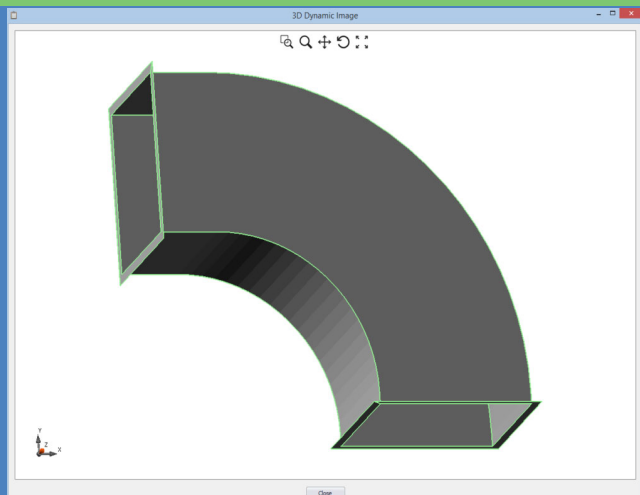
Advanced Shape Nest

QuickDuct CAM Bench+'s shape nest automatically nests parts side by side and rotates them to match interlocking angles and contours.

Part "pairing" maximizes material usage through piece placement. HVAC Fittings nests parts inside internal cutouts for the highest nesting precision. Other nesting features include chain cutting, move & bump manual nesting with mouse-controlled part rotation.

Dynamic 3D Viewer.

Check your fitting with our Dynamic 3D viewer. Pan, tilt, zoom. Check the connectors.



Personalized training & support

ShopData backs its software with 120+ collective years of metal fabricating experience and 37 years in business. No cutting software company has more expertise! We offer hands-on, customized training at your site or ours. Take advantage of our 24/7 phone support through the annual Tech Support and Update Subscription



PLASMA



WATER-JET

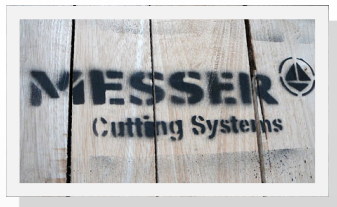
OXYFUEL

LASER

ShopData Systems has partnerships with the leading CNC OEM's to bring our clients the most comprehensive software/cutting table solutions in the industry to meet their CNC software needs and budgets now and in the future.

Our partners are on the cutting edge of today's CNC technology and due to our relationships with these industry leading manufactures, we're able to bring our clients the latest in controller, torch, and hole cutting technology to address their unique business challenges whether cutting Plasma, Oxy-fuel, Laser, Water-Jet, or Routers.

You can visit all our partners at www.shopdata.com and click on there links to contact the sales dept., and ask them to show you the latest in ShopData software solutions for their CNC machines.



The Complete Solutions...



W. NEAL SERVICES (INDIA) PVT. LTD



shopdata.com

They Cut Right From the Start!