



Excellence in Industrial Nesting Software Since 1975

Oxy



Plasma



WaterJet



Laser



ShopData provides and supports programmable post processors for all ShopData Systems CNC Applications.

QUICKCAM

New! User Configured Screen Layout

Manual Nesting

Common Line Cutting & Chain Cutting

Import DXF

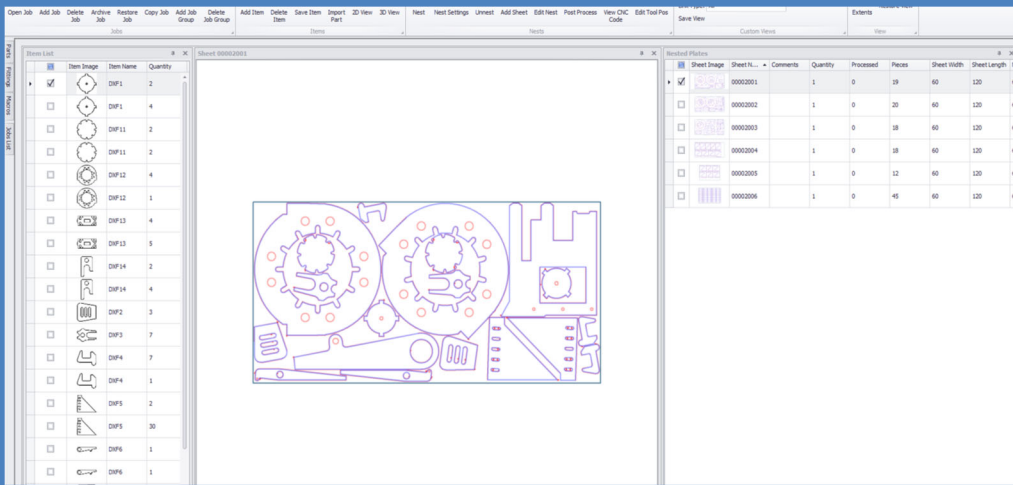
Automatic Tooling

Manual/Selective Tooling

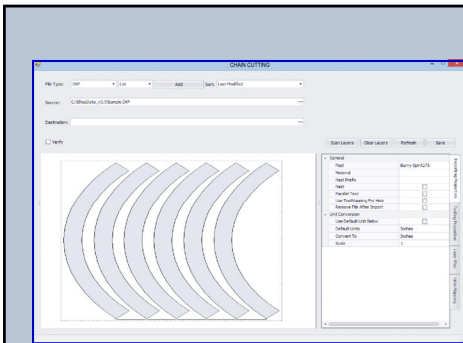
CNC Cutting

ShopData Systems is an Employee Owned Company

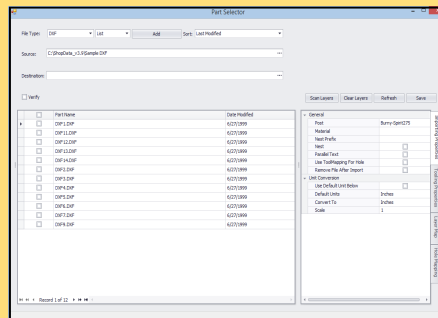
shopdata.com



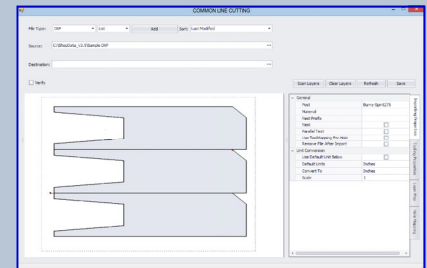
Our new user configurable screen is designed to give you the maximum flexibility and maximum productivity. You arrange the screen the way you want, even use two screens, whatever helps you get the job done!



Chain Cutting



Part Selector Screen
For Importing Parts



Common Line Cutting

The tools you need for parts cutting!

QuickCAM has all the features you need to design, draw and process your parts for CNC cutting.

Manual nesting & tooling features optimize the performance of your machine.

QuickCAM combines a powerful built-in drawing tool, flexible automatic and interactive tooling and manual nesting to give you the basic tools you need to process one or more accurate parts.

Manual Nesting

Common Line & Chain Cutting

Advanced CAD

Automatic Tooling

Manual / Selective Tooling

CNC Cutting



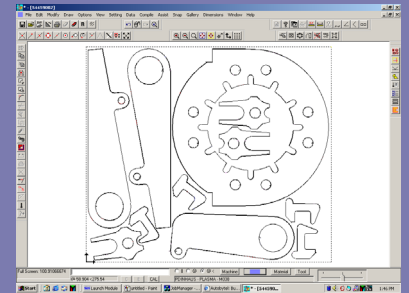
1771 International Parkway
Suite 127
Richardson, TX 75081

Use Shop Data software's visual drawing tools to design the simplest or most complex of parts. Or import drawing files from other software individually or in batches – they are automatically tooled; you simply nest and cut as parts!

A diagram of a cell. It features a large, circular nucleus in the center, which contains a smaller, darker nucleolus. The nucleus is surrounded by a network of lines representing the endoplasmic reticulum. The entire cell is enclosed within a larger, irregular boundary.

The screenshot shows a SolidWorks 2D drawing of a mechanical part. The part is a rectangular plate with three vertical slots. The top slot is the widest, the middle slot is narrower, and the bottom slot is the narrowest. The drawing is in a standard 2D format with dimensions and labels. The top slot is labeled with a dimension of 10.00. The middle slot is labeled with a dimension of 5.00. The bottom slot is labeled with a dimension of 2.50. The overall width of the plate is 15.00. The overall height of the plate is 10.00. The drawing is in a standard 2D format with dimensions and labels.

QuickCAM's manual nesting allows chain cutting, move & bump manual nesting with mouse-controlled part rotation.



With our powerful drawing module based SmartContour™ tool you can precisely adjust and control kerf compensation, lead ins, lead outs, tabs, and overburn on small holes, medium holes, internal and external profiles, allowing you to hold tight tolerances and improve the quality of your cutting operations. Apply your settings to individual parts on the fly or globally for maximum flexibility.

EXTERNAL	
LEADIN	
LENGTH	.3
RADIUS	0
ANGLE	90
STEPS	1
TAB	0
KERFADJUST	0
LEADOUT	
LENGTH	.2
RADIUS	0
ANGLE	45
STEPS	1
OVERBURN	0
CORNERLOOP	
LOOPS ON BE...	YES
LOOPS ON UN...	YES
INTERNAL	
LEADIN	
LENGTH	.3
RADIUS	0
ANGLE	90
STEPS	1
TAB	0
KERFADJUST	0
LEADOUT	
LENGTH	.2
RADIUS	0
ANGLE	45
STEPS	1
OVERBURN	0
CORNERLOOP	
LOOPS ON BE...	YES
LOOPS ON UN...	YES
SMALL HOLES	
Min	0.38
Max	0.50
LEADIN	
LENGTH	0.03
RADIUS	0.03
ANGLE	180
STEPS	1
TAB	0.05
KERFADJUST	0
LEADOUT	
LENGTH	0.05
RADIUS	0.05

Print reports for setting up and running the part and for costing information.

Doc# 010-9601				Part Summary			
Item	Lot# 0008	Iss	MADE	QTY	416		
Class	ABC Machine	Rev	0001				
DPMS #	A112	Qty	1				
Part No	0-1	Matl No	16 600				
Drawn By	AS	Est Area	177.19	T	16 600		
		Surf Area					

Tooling Summary							
Tool Name	# of Items	Item Type	Quantity	Unit Length	Issued	Time	Quantity
MEET	6.00	0.00	0.16	74.00	100.00	0.76	116
Total	6.00	0.00		74.00		0.76	
Total Processing Time			1.25	Processing Cost		\$.45	

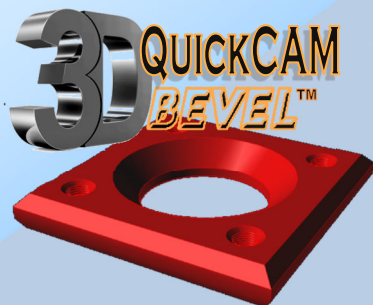
Material Summary			
Material	Units	Order Qty	Material Cost
16 600 Steel	16.67	0.31	4.40

Actual Out Spent _____ Actual Processing Time _____

ShopData backs its software with 120+ collective years of metal fabricating experience and 35+ years in business. No cutting software company has more expertise! We offer hands-on, customized training at your site or ours. Take advantage of our 24/7 phone support through the annual Tech-Support and Update Subscription.



Excellence in Industrial Nesting Software Since 1975



ShopData Systems provides & supports programmable post processors for all CNC Applications.



- ✓ Five Axis Beveling
- ✓ Shared pre-drill
- ✓ Auto corner loop and in-line loop
- ✓ Dynamic 3D Part Viewer



ShopData Systems is an Employee Owned Company

shopdata.com



Excellence in Industrial Nesting Software Since 1975

"Highest Reported Satisfaction with Support & Training"

ShopData Systems provides & supports programmable post processors for all CNC Applications.



InventoryTrak™

Manage Your Valuable Plate Inventory

Create Remnants as You Nest

Return Remnants to Inventory and Re-Nest on Them

Create Your Own Remnants and get them off of the Shop Floor

Server version

ShopData Systems is an Employee Owned Company

shopdata.com



Excellence in Industrial Nesting Software Since 1975

ShopData Systems provides & supports programmable post processors for all CNC Applications.



MRPLink

Import NC-1 files and Inventory from your MRP System

Deplete Inventory as You Nest

Return the results to your MRP software

ShopData Systems is an Employee Owned Company



Excellence in Industrial Nesting Software Since 1975

ShopData Systems provides & supports programmable post processors for all CNC Applications.



EdgeStart™ Advanced Nesting

The Most Advanced Nesting Engine in the Industry!

Achieve Single Digit Scrap Rates!

Automatic Common Line Cutting!

Automatic Chain Cutting!

Now with StripSaver

Process an Entire Plate with No Full Kerf Pierces

"Highest Reported Satisfaction with Support & Training"

ShopData Systems is an Employee Owned Company