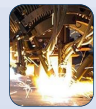




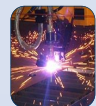
Excellence in Industrial Nesting Software Since 1975

QuickDuct CAM MASTER

ShopData provides
and supports
programmable
post processors
for these CNC
Applications.



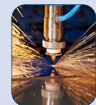
Oxy



Plasma



WaterJet



Laser

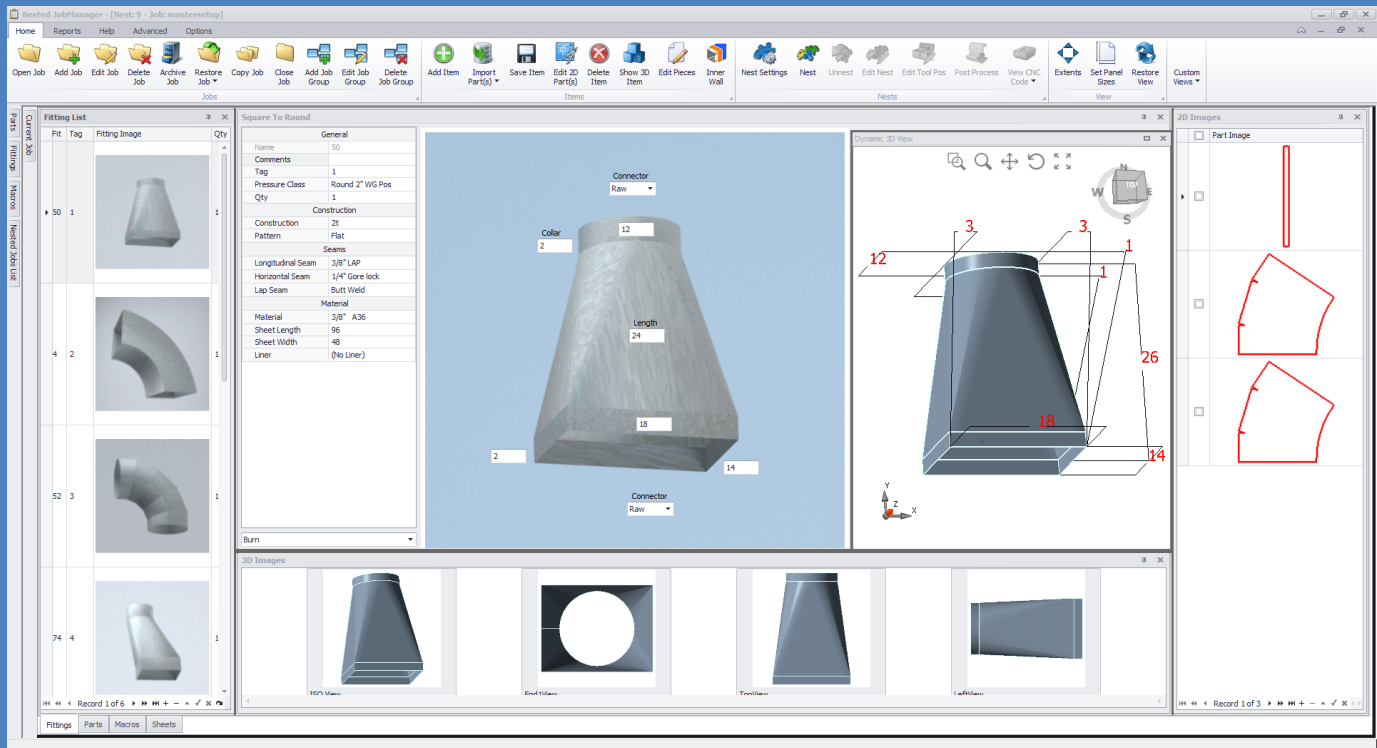
New! User Configurable Screen Layout!
Automatic Fitting Layout
Full SMACNA Seam & Connector Library
Nest to Maximize Material Yield
The Most Comprehensive Fitting Library
Job Costing
Liner cutting
Includes Roof curbs, China caps, Silhouette hoods
Markets: HVAC Blow pipe and Sheet Metal

***"The Industries
Premier Duct Fabrication
software package"***



ShopData Systems is an Employee Owned Company

shopdata.com



Our new user configurable screen is designed to give you the maximum flexibility and maximum productivity. You arrange the screen the way you want, even use two screens, whatever helps you get the job done!

QuickDuct CAM Master's powerful features take the manual effort out of job takeoff, tooling, nesting and downloading. It includes the "extras" that you would find only in a system developed by sheet metal experts. A complete rectangle, round and flat oval fitting library and comprehensive seam & connectors libraries gives you everything you need to design, input, nest and cut your fittings jobs.

You can even modify the finished patterns for special applications by using our powerful "Workbench" drawing tool. You can place holes, chop pieces, scale or stretch them, and even merge two patterns together.

Now with our new "Fly-Out Window" user interface.

By using powerful Windows' features, our new Fitting Palette makes it easy to select your fittings, input the dimensions, quantity and material type, and then see an actual 3D preview of the fitting and the 2D flat layout of the parts. One click of the auto-nest button nests the parts to optimize material usage and then you can view the nested plates as they will be cut.

You can even modify the finished patterns for special applications by using our powerful "Workbench" drawing tool. You can place holes, chop pieces, scale or stretch them, and even merge two fittings to make your own custom fittings.

Automatic Fitting Layout

Full SMACNA Seam & Connector Library

Nest to Maximize Material Yield

The Most Comprehensive Fitting Library

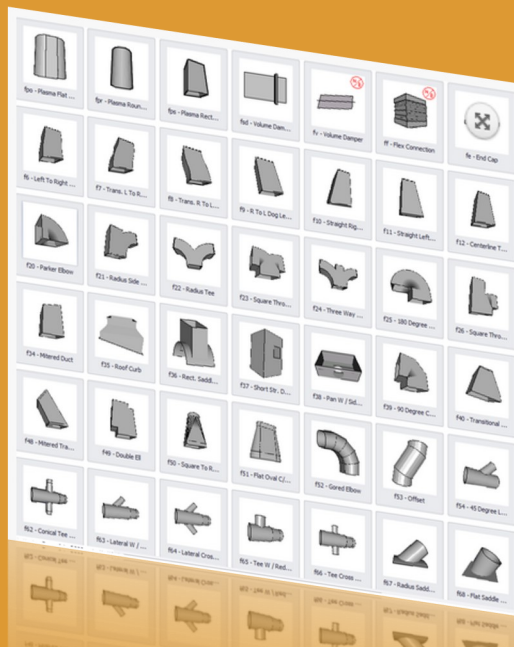
Includes Roof curbs, China caps, Silhouette hoods

Job Costing

Liner cutting

Most comprehensive fitting library in the Industry that provides the ultimate in flexibility!

Shop Data's QuickDuct CAM Master fittings library includes rectangle, round and flat oval fitting shapes including cones, offsets, elbows, wyes, branch fittings and square-to-rounds. Capabilities such as mitering, reducing, concentric/eccentric dimensioning are available as well as selectable seam placement, selectable hole sizing, dual wall, tie rod holes and inside/outside diameter material compensation.

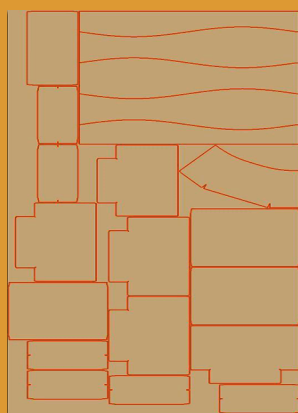
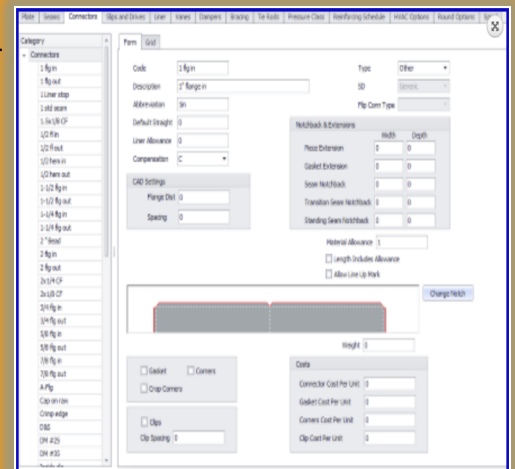


If you frequently cut similar parts with varying dimensions, Shop Data's Macro Programming Utilities allows you to build your own dimensionable shape library! Now you don't have to redraw every variation of a given part type. This feature works great for multiple component assemblies such as containers, enclosures, curbs, even your own HVAC fitting design!



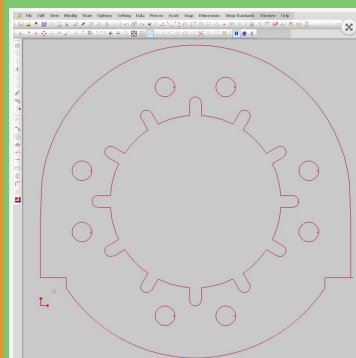
Incredible user-definable shop standards allow you to modify your seams and connectors.

Shop Data allows you to customize your HVAC software. Use standard industry pressure classes, or define your own pressure classes and construction tables. Define seams, connectors, vanes, materials and more. Enter your expected costs for accurate job costing!



QuickDuct CAM Master's Advanced Shape Nesting automatically nests parts side by side and rotates them to match interlocking angles and contours. Part "pairing" maximizes material usage through piece placement.

Advanced Shape nesting nests parts inside internal cutouts for the highest nesting precision. Other nesting features include chain cutting, move & bump manual nesting with mouse-controlled part rotation.

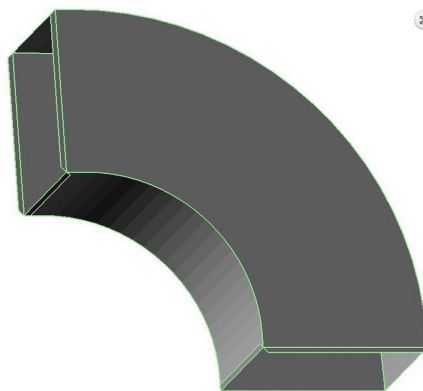


Use the software's visual drawing tools to design the simplest or most complex parts. DXF files can be imported individually or in batches and automatically tooled, ready to nest and cut as parts!

With QuickDuct CAM Master's incredible technology you can easily drag & drop, copy, move, and rotate parts, or move lead-ins and lead-outs anywhere along the tool path or on the nested sheet. You can work with multiple drawings simultaneously and utilize dynamic zoom capability for ultimate precision in your drawings. Automatically tool parts for multiple tools using Shop Data System's innovative "layers" technology.

Dynamic 3D Viewer.

Check your fittings with our Dynamic 3D viewer. Pan, tilt, zoom. Check the connectors and the offsets.



Personalized training & support

ShopData backs its software with 120+ collective years of metal fabricating experience and 37 years in business. No cutting software company has more expertise! We offer hands-on, customized training at your site or ours. Take advantage of our 24/7 phone support through the annual Tech Support and Update Subscription.



PLASMA

OXYFUEL



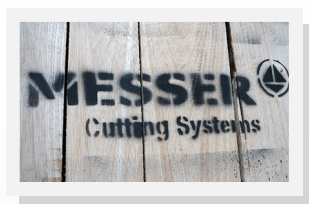
WATER-JET

LASER

ShopData Systems has partnerships with the leading CNC OEM's to bring our clients the most comprehensive software/cutting table solutions in the industry to meet their CNC software needs and budgets now and in the future.

Our partners are on the cutting edge of today's CNC technology and due to our relationships with these industry leading manufactures, we're able to bring our clients the latest in controller, torch, and hole cutting technology to address their unique business challenges whether cutting Plasma, Oxy-fuel, Laser, Water-Jet, or Routers.

You can visit all our partners at www.shopdata.com and click on there links to contact the sales dept., and ask them to show you the latest in ShopData software solutions for their CNC machines.



The Complete Solutions...



W. NEAL SERVICES (INDIA) PVT.



shopdata.com

They Cut Right From the Start!