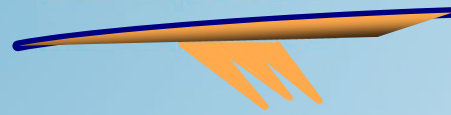
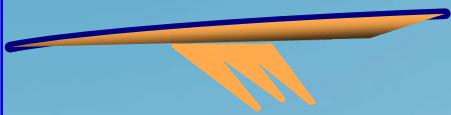




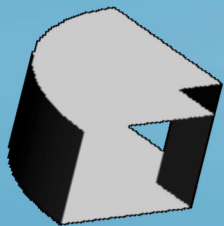
**Excellence in Industrial Nesting Software Since 1975**



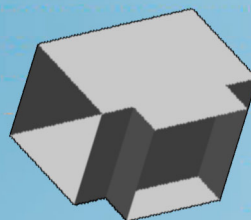
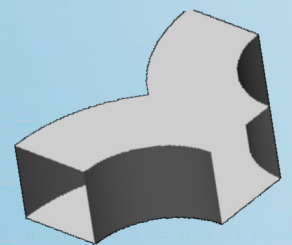
**B**  
**QuickDuct**  
**CAM**  
**BENCH**



**B+**  
**QuickDuct**  
**CAM**  
**BENCH+**

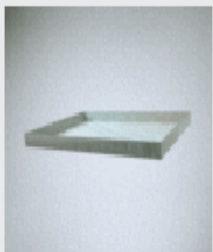


***"The Industries Top 50  
Premier Duct Fabrication  
Fitting Shapes"***

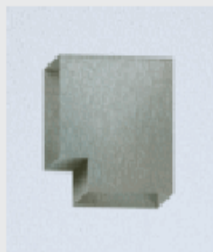


***ShopData Systems is an Employee Owned Company***

**shopdata.com**



**fe-End Cap**



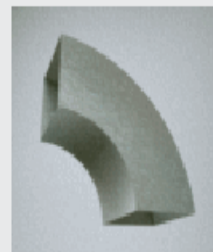
**f1-Square 90  
Degree Elbow**



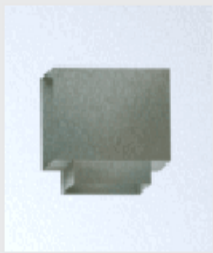
**f2-Square Throat  
Radius Heel Elbow**



**f3-Angle Elbow**



**f4-Radius Elbow**



**f5-Square Tee**



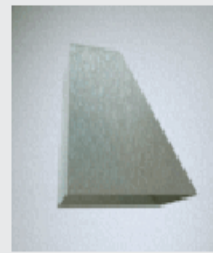
**f6-Left to Right  
O.G. Offset**



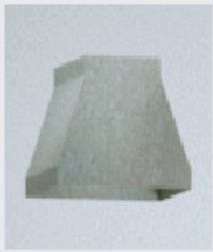
**f8-Transition Right  
to Left O.G. offset**



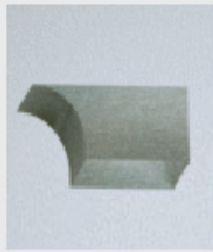
**f10-Sraight  
Right Transition**



**f11-Sraight  
Left Transition**



**f12- Centerline  
Transition**



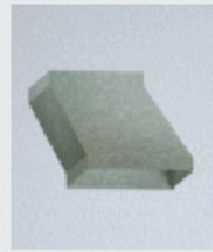
**f15-Square  
Tee Tap**



**f16- 45 Degree  
Angle Tap**



**f17-Sraight Tap**



**f18-Transition  
Offset**



**f19-Short  
Straight Duct**



**f21-Radius  
Side Takeoff**



**f22-Radius Tee**



**f23-Square Throat  
Radius Tee**



**f24-Three Way  
Radius Tee**



**f27-Wye Branch**



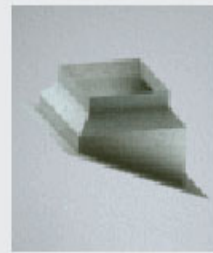
**f31-Increase Area  
Radius Gooseneck**



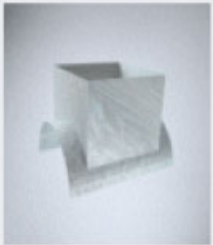
**f32-Three Way  
Square Tee**



**f33- Radius  
Angle Tap**



**f35-Roof Curb**



**f36-Recangle Saddle  
Offset Oval Pipe**



**f38-Pan /w Side &  
Bottom Holes**



**f41-Square Offset**



**f43-Transition**



**f44-O.G. Offset**



**f49-Double Elbow**



**f52-Gored Elbow**



**f67-Radius Saddle  
Takeoff**



**f68-Flat Saddle  
Takeoff**



**f69-Reducer**



**f70-Reducing  
Offset**



**f71-Variation  
Wye Branch**



**f72-Tapered Wye**



**f74-Offsetting  
Square to Round**



**f76-Roof Jack**



**f83-Round to  
Square Elbow**



**f147-Square 135  
Degree Elbow**



**f163-Recangle  
Saddle Takeoff**



**f176-Parker Elbow**



**f258-Flat Throat**



**f264-Flat Throat  
Flat Heel Elbow**



**F268 - Single  
Rectangle Saddle**



**F278 - Lateral  
Rectangle Takeoff**



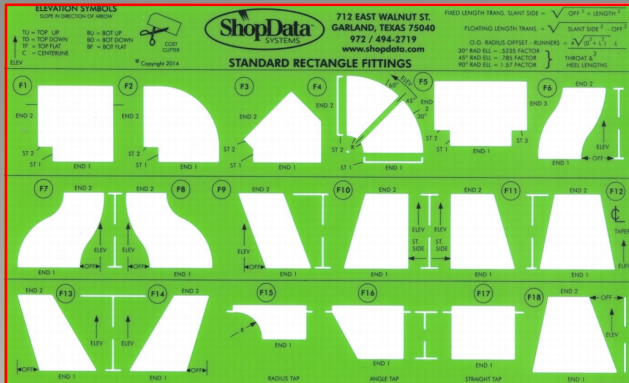
**f304-Fitting w/  
Oval Taps**



**f305-Fitting w/  
Square Taps**

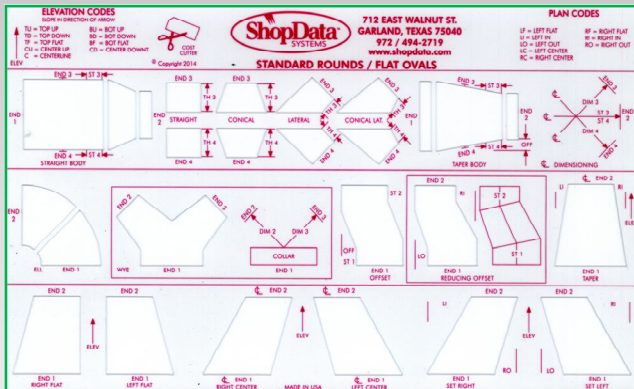


# HVAC Fitting Templates



## RECTANGLE

The team at ShopData Systems offers two of the most popular HVAC fitting templates. They can provide a range of drawing options in both round and rectangle fittings, with a choice of shapes from which to choose. By taking advantage of these templates, you will be able to simplify elevation, standardize shop ticketing, and even improve the communication process between the field and the shop.



## ROUND

When it comes to ordering templates, we strive to offer several options to suit every client. You can order a single template or several at a time, and we have various pricing options available depending on the size of your purchase.

To request a template you can fill out our order form on our website or qr code (below). And once your order is confirmed, we will ship it out the next business day.

**ShopData Systems, Inc.**  
**1771 International Parkway**  
**Suite 127**  
**Richardson, Tx. 75081**  
**[www.shopdata.com](http://www.shopdata.com)**

For more information about HVAC fitting templates, or personalized templates with your companies logo & information imprinted, please feel free to contact us today.

